

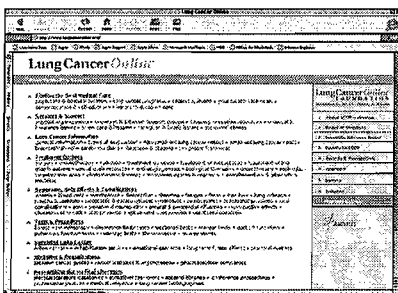
Lung cancer resources

Dion Smyth's review of the internet for palliative nursing

Lung cancer is the second most common form of cancer in the UK after breast cancer and there are over 38 000 new cases of lung cancer in the UK each year. Worldwide, lung cancer incidence and mortality continue to rise – it is, reportedly, the ninth most common cause of death in the world.

Many patients with lung cancer unfortunately present with metastatic disease, which ultimately leads to an untimely death. As the debate about smoking in public places in the West continues, this month's Web Words reviews sites that provide material for helping us care for patients with this disease.

www.lungcanceronline.org/

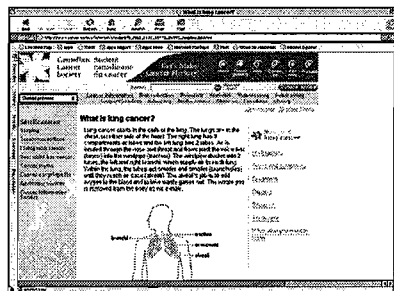


The Lung Cancer Online Foundation states that its aim is to: 'improve the quality of care and quality of life for people with lung cancer by funding lung cancer research and providing information to patients and families via Lungcanceronline.org'.

Lungcanceronline.org is the sort of logically signposted, well-designed directory that all website directory designers should aspire to. There is no search facility within this straightforward looking site, which consists purely of drop down header links. However, links are clear and quick, and offer an excellent range of information and resources for patients, families and health-care professionals, with no distracting graphics.

Karen Parles, a lung cancer survivor and librarian, founded the site and acts as its editor. Her experience offers an insight into user-friendliness – pages are readable and important information is easy to find. When I visited, the site's pages had not been updated since May, nevertheless, the content is otherwise faultless. Links to information on lung cancers, tests and procedures, treatment options, symptoms and side effects are listed. In the services and support pages there are practical, helpful hints on topics such as spirituality and survivorship, as well as comprehensive hospice and end-of-life care resources. A well-organized site and well worth a visit.

www.cancer.ca/ccs/internet/front-door/0,,3172,00.html

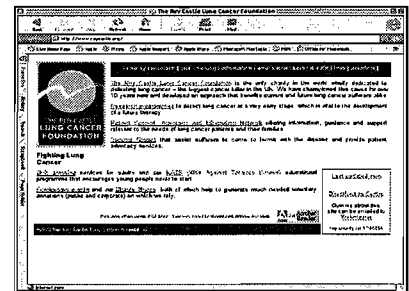


Although the website of the Canadian Cancer Society may not have a wealth of information about palliative or supportive care, it does provide a well-organized explanation of lung cancer, its signs and symptoms, diagnosis, staging and treatment.

Comprehensive and complex clinical information is presented with clarity of expression that suggests an awareness of consumer/user friendliness. Navigation is consistent and there is a search facility, although typing 'palliative care' did not prove too fruitful. This site would make interesting and easy reading for

someone unfamiliar with the basics of the disease.

www.roycastle.org



The Roy Castle Lung Cancer Patient Support and Information Network holds the aim of 'access to a comprehensive support, information and advocacy service for all issues concerning lung cancer' for patients and families in Great Britain.

Although there is much to be commended on this website, such as the friendly tone, well thought-out directory design and links to EU studies, there are a few niggles that need to be sorted out. The pop-up invite to participate in a competition super-draw is understandable, it is a charity after all, but the annoyance of any pop-up is compounded by the lack of updated material. When I visited, the news page had not been added to since March – somewhat surprising considering the recent cases against tobacco companies. In addition, the pages within the information section (common signs and symptoms, tests, types of cancer and coping with a diagnosis) would not open.

As a prominent public and professional resource this site is yet to realize its full potential, but it nevertheless contains enough material to inform health-care workers and enhance supportive care.

Dion Smyth is Lecturer-practitioner in cancer and palliative care, University of Central England, Birmingham